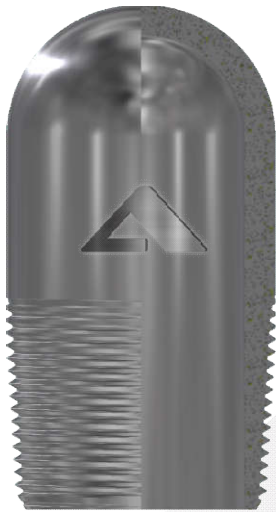


# Bull Plugs

## Description

A threaded nipple with a rounded, closed end used to close off the end of a line. Used in the Oil & Gas field from well testing equipment, to wellheads and producing strings.



## Features & Benefits

- ✓ Available in various sizes
- ✓ Available in a variety of material grades. J55, L80, etc.
- ✓ Available in multiple threads. EUE being the most common
- ✓ Manufactured as one complete part
- ✓ Available with a 1/2" NPT thread port

## Nominal Bull Plug Sizes Available

- 1.66 NUE J55
- 1.66 NUE L80
- 1.99 NUE J55
- 1.99 NUE L80
- 2-3/8 (60.3mm) EUE J55
- 2-3/8 (60.3mm) EUE L80
- 2-7/8 (73.0mm) EUE J55
- 2-7/8 (73.0mm) EUE L80
- 3-1/2 (89.0mm) EUE J55
- 3-1/2 (89.0mm) EUE L80